

ADVANTEST®

A Test System OS for System LSIs

Viewpoint

The Viewpoint is full-fledged software that supports from design processes to manufacturing processes



The Viewpoint's 'link' functions offer a wide range performances from production processes to manufacturing processes, disregard of online or offline status.

The Viewpoint complies with data used by conventional manufacturing tolls, creating a distraction free environment that helps test engineers think continuously. The Viewpoint is based on the UNIX OS, the industry's de facto standard that allows easy establishment of TCP/IP-based networks.

Viewpoint Operating System

The Viewpoint is a UNIX-based operating system designed by ADVANTEST. It allows simplified production and revision of test programs; execution of such programs; debugging; analyses of produced data. These functions that range from designing to manufacturing are done regardless of online or off-line conditions.

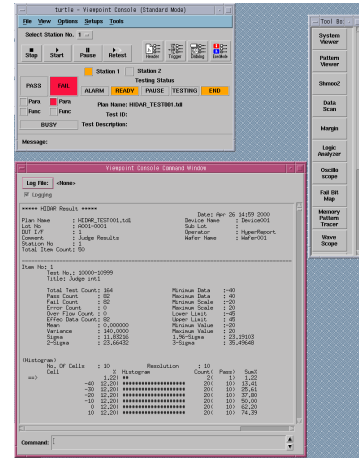
Shortened TAT Time

The Siteseer function, bundled with the Viewpoint, includes not only conversion of conventional programs but also an automatic function that produces new programs. Use a mouse for setting and converting various data at ease. This shortens the TAT time.

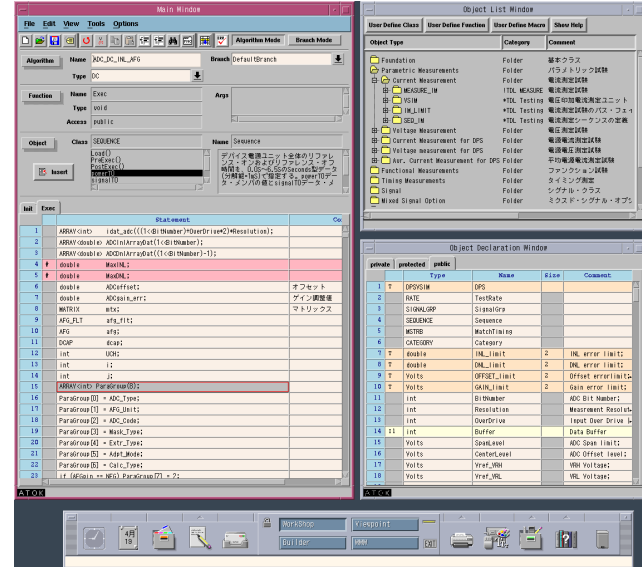
Compatibility with Other Testing Systems

The Viewpoint supports fully the T6600/6500 series test systems, allowing testing, evaluation, and analyses under a uniform operation environment. Test programs produced by the Viewpoint has an excellent portability with those used by other test systems.

Viewpoint Console

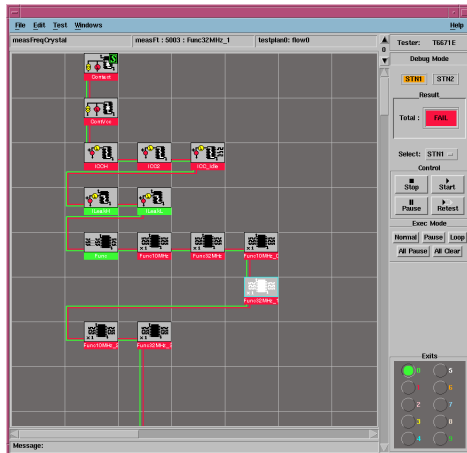


Algorithm Editor

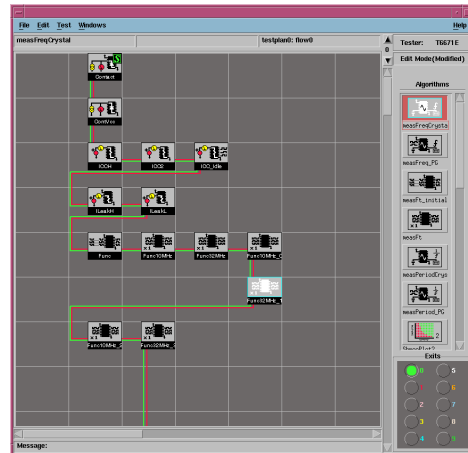


Viewpoint SC

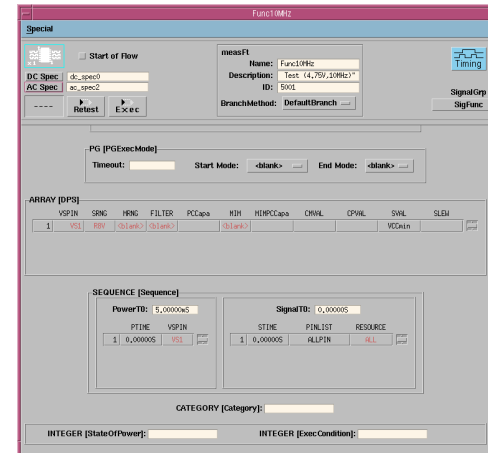
Siteseer



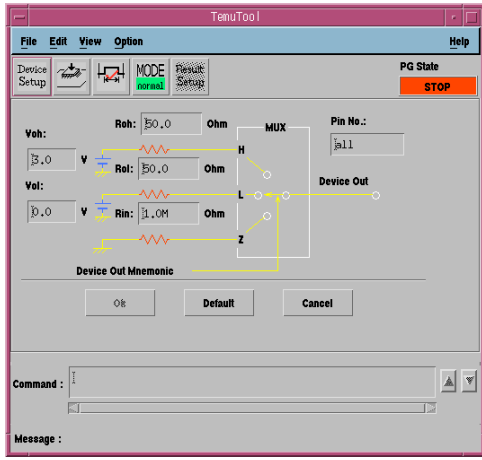
Flow Editor



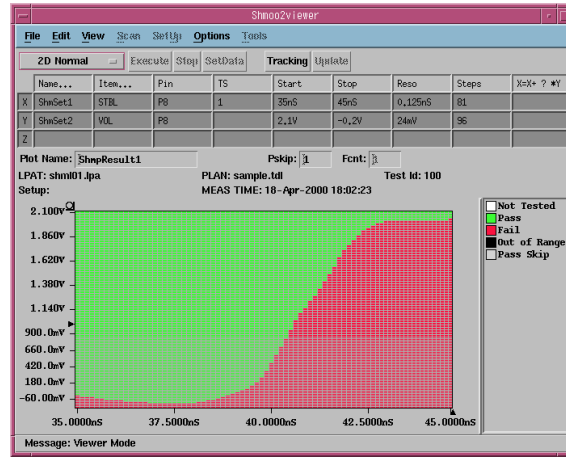
Test Editor



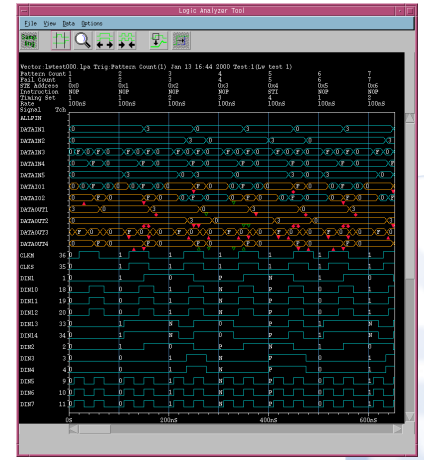
Vsim Menu Tool



Shmoo Plot



Logic Analyzer Tool



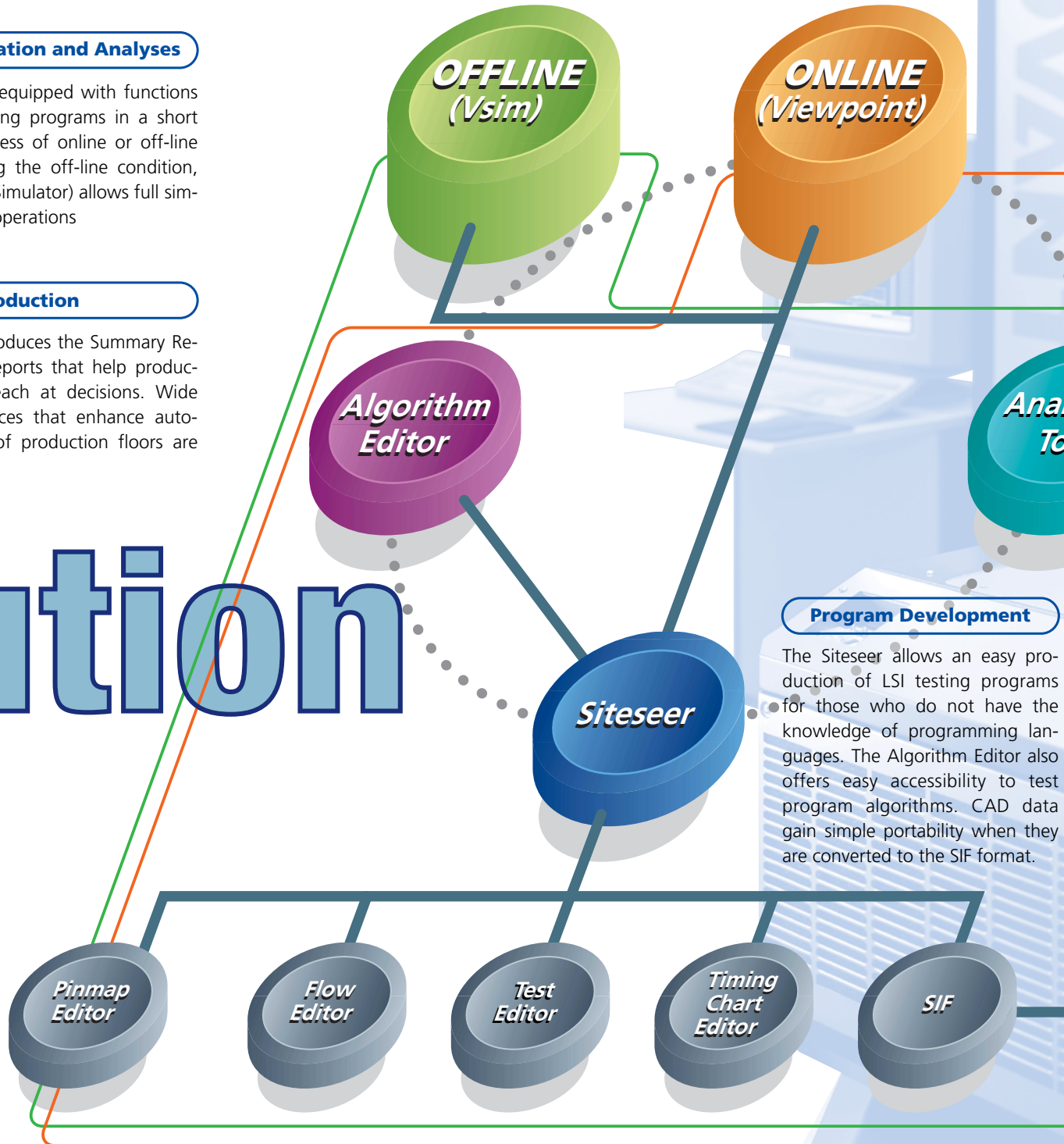
Device Evaluation and Analyses

The Viewpoint is equipped with functions that execute testing programs in a short TAT time, regardless of online or off-line conditions. During the off-line condition, the Vsim (Virtual Simulator) allows full simulation of device operations

Production

The Viewpoint produces the Summary Report and other reports that help production engineers reach at decisions. Wide ranges of interfaces that enhance automatic operation of production floors are also available.

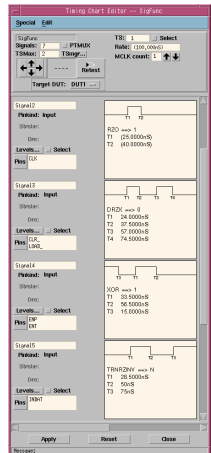
Evolution



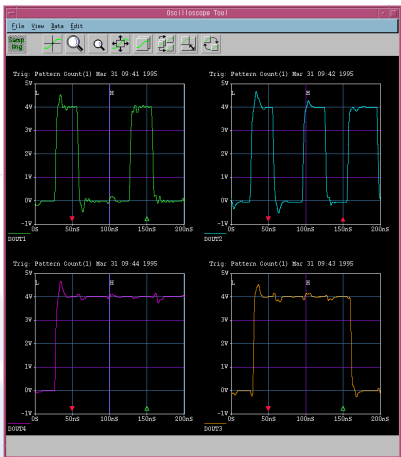
Program Development

The SiteSeer allows an easy production of LSI testing programs for those who do not have the knowledge of programming languages. The Algorithm Editor also offers easy accessibility to test program algorithms. CAD data gain simple portability when they are converted to the SIF format.

Timing Chart Editor



Oscilloscope Tool



yzing
ool

Shmoo
Plot

Logic
Analyzer
Tool

Oscilloscope
Tool

Device Design

CAD

SIF: Sitseser Interface Format
CAD: Computer Aided Design

Supporting Systems

T6600 Series System LSI Test System

T6500 Series VLSI Test System

ULTRA5 Solaris (When Vsim is used)

Product Names

Viewpoint OS: Bundled with the T6600/6500 Series Test Systems

Vsim: Off-line environment

Main Tools

Viewpoint Console: Test program Control
(including debugging function)

TDL Debugger: Debugging Test Programs

Vsim Menu Tool: Simulation control of test systems

Algorithm Editor: Development of test algorithms for the Siteviewer

Siteviewer: Establishing test program conditions
Automatic development of test programs
Execution and debugging of test programs

System Viewer: Confirmation and revision of test conditions

**Pattern Viewer/
Pattern Tracer:** Displaying, revision, tracing of patterns

Logic Analyzer: Displaying and analyses of input and output
wave patterns

Oscillo Scope: Displaying and analyses of output wave patterns

Margin Plot: Plotting margin data

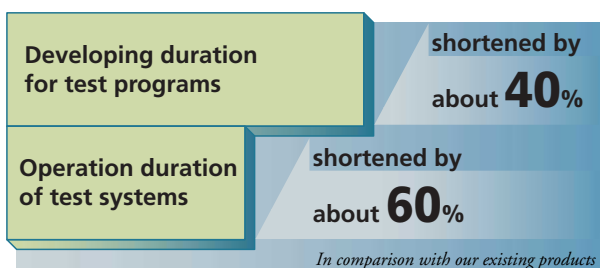
Shmoo Plot: Displaying function of two or three-
dimensional data

Wafer Map: Map display and Prober control (manual)

**Fail Bit Map
(ALPG is in operation):** Display of fail data

Wave Scope: Displaying and analyses of analogue wave patterns

**Hyper Report/
Summary Report/
Histogram Report:** Adoption and displaying of wide range information



Solaris and ULTRA are registered trademarks of Sun Microsystems Inc.

UNIX is a registered trademark in the US and other countries licensed by XIOPEN Co. Ltd.

Please be sure to read the manual of product thoroughly before using the products.

Specifications may change without notification.

ADVANTEST CORPORATION

Shinjuku-NS building, 4-1
Nishi-Shinjuku 2-chome
Shinjuku-ku, Tokyo 163-0880,
Japan
Tel: +81-3-3342-7500
Fax: +81-3-5381-7661
<http://www.advantest.co.jp>

Advantest America, Inc

3201 Scott Blvd., Santa Clara,
CA 95054, U.S.A
Tel: +1-408-988-7700
Fax: +1-408-987-0691

Advantest (Europe) GmbH

Stefan-George-Ring 2,
D-81929 Munich, Germany
Tel: +49-89-99312-0
Fax: +49-89-99312-101

Advantest (Singapore) Pte. Ltd.

438A Alexandra Road,
#8-03/06 Alexandra Technopark
Singapore 119967
Tel: +65-274-3100
Fax: +65-274-4055

Advantest Taiwan, Inc.

No.1 Alley 17, Lane 62,
Chung-Ho Street, Chu-Pei City,
Hsin Chu Hsien, Taiwan, R.O.C.
Tel: +886-3-5532111
Fax: +886-3-5541168

Advantest Korea Co., Ltd.

16F, MIRAEWASARAM Bldg.,
942-1, Daechi-Dong,
Kangnam-ku,
#135-280, Seoul, Korea
Tel: +82-2-3452-7157
Fax: +82-2-3452-0370